



# Morecambe Offshore Windfarm: Generation Assets Environmental Statement

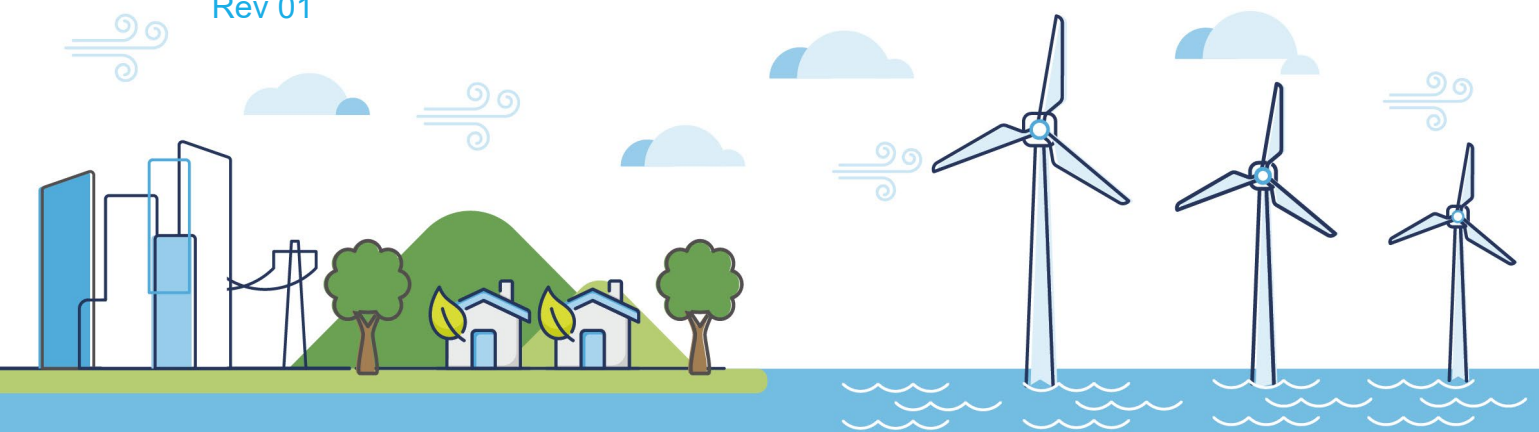
## Volume 5

### Chapter 18 SLVIA Figures (Part 12 of 34)

PINS Document Reference: 5.3.18.12

APFP Regulation: 5(2)(a)

Rev 01



## Document History

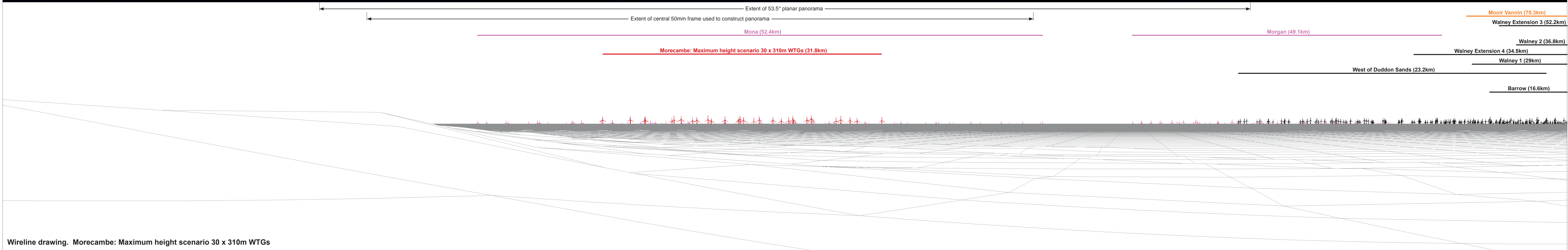
<b>Doc No</b>	MOR001-FLO-CON-ENV-FIG-1180	<b>Rev</b>	01
<b>Alt Doc No</b>	PC1165-RHD-ES-XX-DG-Z-0018		
<b>Document Status</b>	Approved for Use	<b>Doc Date</b>	May 2024
<b>PINS Doc Ref</b>	5.3.18.12	<b>APFP Ref</b>	5(2)(a)

<b>Rev</b>	<b>Date</b>	<b>Doc Status</b>	<b>Originator</b>	<b>Reviewer</b>	<b>Approver</b>	<b>Modifications</b>
01	May 2024	Approved for Use	Royal HaskoningDHV	Morecambe Offshore Windfarm Ltd	Morecambe Offshore Windfarm Ltd	n/a



Baseline photograph

This image provides landscape and visual context only



Wireline drawing. Morecambe: Maximum height scenario 30 x 310m WTGs

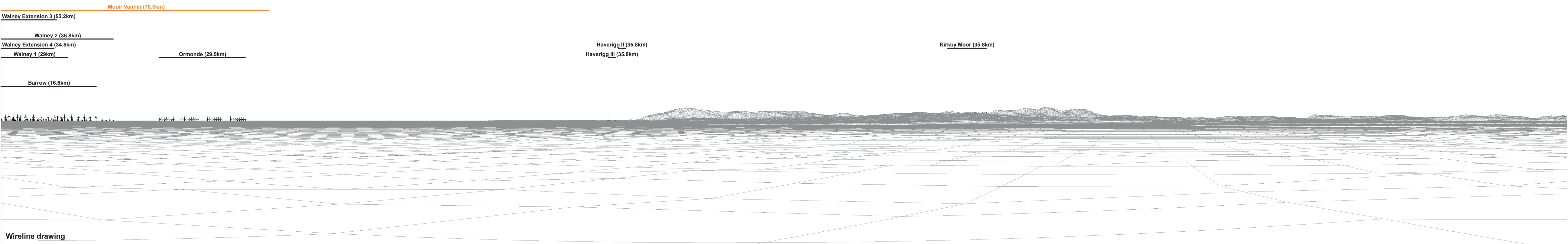
OS reference:	331492 E 447929 N	Horizontal field of view:	90° (cylindrical projection)	Camera:	Canon EOS 6D
Eye level:	8.2 m AOD	Principal distance:	522 mm	Lens:	EF50mm f/1.4 USM
Direction of view:	250°			Camera height:	1.5 m AGL
Nearest turbine:	31.810 km			Date and time:	15/09/2022, 20:08

Figure: 18:31h  
Viewpoint 8: Fleetwood (Rossall Point)



Baseline photograph

This image provides landscape and visual context only



Wireline drawing

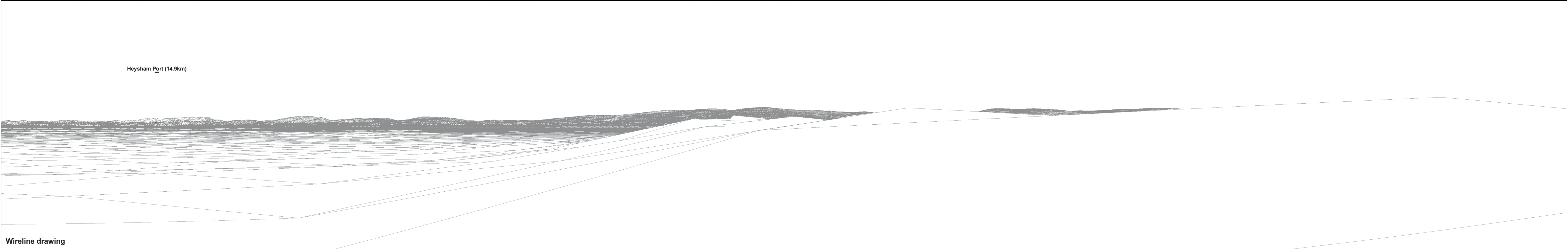
OS reference:	331492 E 447929 N	Horizontal field of view:	90° (cylindrical projection)	Camera:	Canon EOS 6D
Eye level:	8.2 m AOD	Principal distance:	522 mm	Lens:	EF50mm f/1.4 USM
Direction of view:	340°			Camera height:	1.5 m AGL
Nearest turbine:	31.810 km			Date and time:	15/09/2022, 20:08

Figure: 18:31i  
Viewpoint 8: Fleetwood (Rossall Point)



Baseline photograph

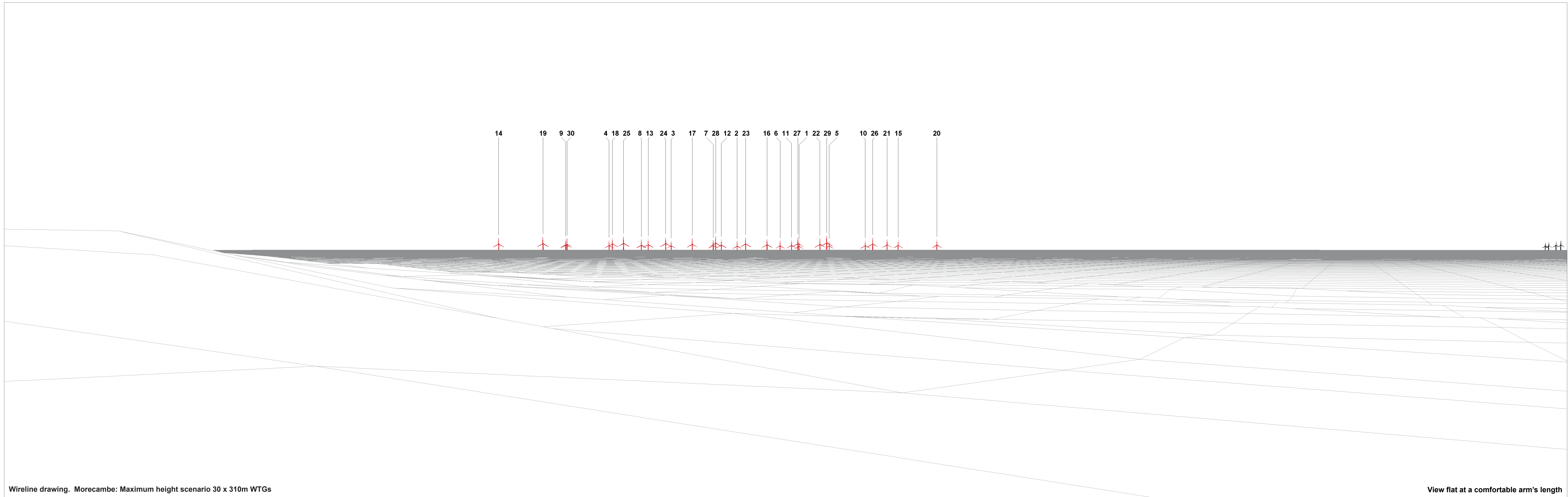
This image provides landscape and visual context only



Wireline drawing

<b>OS reference:</b> 331492 E 447929 N	<b>Horizontal field of view:</b> 90° (cylindrical projection)	<b>Camera:</b> Canon EOS 6D
<b>Eye level:</b> 8.2 m AOD	<b>Principal distance:</b> 522 mm	<b>Lens:</b> EF50mm f/1.4 USM
<b>Direction of view:</b> 70°		<b>Camera height:</b> 1.5 m AGL
<b>Nearest turbine:</b> 31.810 km		<b>Date and time:</b> 15/09/2022, 20:08

Figure: 18:31j  
Viewpoint 8: Fleetwood (Rossall Point)



Wireline drawing. Morecambe: Maximum height scenario 30 x 310m WTGs

View flat at a comfortable arm's length

<b>OS reference:</b>	331492 E 447929 N	<b>Horizontal field of view:</b>	53.5° (planar projection)	<b>Camera:</b>	Canon EOS 6D
<b>Eye level:</b>	8.2 m AOD	<b>Principal distance</b>	812.5 mm	<b>Lens:</b>	EF50mm f/1.4 USM
<b>Direction of view:</b>	250°	<b>Paper size:</b>	841 x 297 mm (half A1)	<b>Camera height:</b>	1.5 m AGL
<b>Nearest turbine:</b>	31.810 km	<b>Correct printed image size:</b>	820 x 260 mm	<b>Date and time:</b>	15/09/2022, 20:08

**Figure: 18:31k**  
**Viewpoint 8: Fleetwood (Rossall Point)**



Baseline Photograph

View flat at a comfortable arm's length

<b>OS reference:</b>	331492 E 447929 N	<b>Horizontal field of view:</b>	53.5° (planar projection)	<b>Camera:</b>	Canon EOS 6D
<b>Eye level:</b>	8.2 m AOD	<b>Principal distance</b>	812.5 mm	<b>Lens:</b>	EF50mm f/1.4 USM
<b>Direction of view:</b>	250°	<b>Paper size:</b>	841 x 297 mm (half A1)	<b>Camera height:</b>	1.5 m AGL
<b>Nearest turbine:</b>	31.810 km	<b>Correct printed image size:</b>	820 x 260 mm	<b>Date and time:</b>	15/09/2022, 20:08

Figure: 18:311  
Viewpoint 8: Fleetwood (Rossall Point)



Photomontage

View flat at a comfortable arm's length

<b>OS reference:</b> 331492 E 447929 N	<b>Horizontal field of view:</b> 53.5° (planar projection)	<b>Camera:</b> Canon EOS 6D	
<b>Eye level:</b> 8.2 m AOD	<b>Principal distance:</b> 812.5 mm	<b>Lens:</b> EF50mm f/1.4 USM	
<b>Direction of view:</b> 250°	<b>Paper size:</b> 841 x 297 mm (half A1)	<b>Camera height:</b> 1.5 m AGL	
<b>Nearest turbine:</b> 31.810 km	<b>Correct printed image size:</b> 820 x 260 mm	<b>Date and time:</b> 15/09/2022, 20:08	<b>Figure: 18:31m</b> <b>Viewpoint 8: Fleetwood (Rossall Point)</b>